

GARAGE DOOR OPENERS




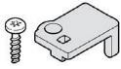


OPENER RAILS WITH 0.8 MM PROFILE THICKNESS



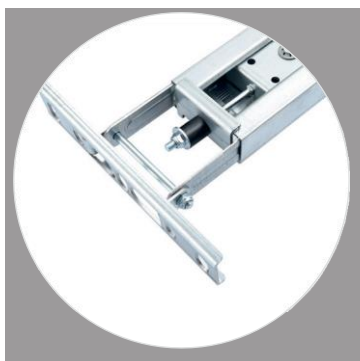
ARTICLE

ART-NO.	DESCRIPTION	WEIGHT	PRICE
RAL121072F	SZ 11-0.8-1P Opener rail with 3,080 mm profile length, 0.8 mm profile thickness, friction bearing and toothed belt. 1-part version with mounting material	5.0 kg	
RAL177209F	SZ 12-0.8-1P Opener rail with 3.330 mm profile length, 0.8 mm profile thickness, friction bearing and toothed belt. 1-part version with mounting material	5.3 kg	
RAL177211F	SZ 13-0.8-1P Opener rail with 4.090 mm profile length, 0.8 mm profile thickness, friction bearing and toothed belt. 1-part version with mounting material	6.5 kg	

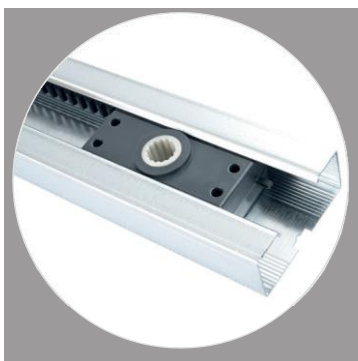
ACCESSORIES

					
Cross bar connection (10 pcs.) for mounting onto the cross bar of the door	Extension set for cross bar connection (10 pcs.)	Suspension clamp (10 pcs.) Additional support for long opener rails	Bowden cable clamp Fixation of a bowden cable to the rail carriage	Cable clip Fixation of cables onto the opener rail	Special 109 Push-open security device (SKG certified)
87 577	97 105	90 870	182 061	76 728	182 006

For the opener systems Comfort 260, 270, 280, 360, 370, 380, 390, 260 accu



Lintel deflection with friction bearing



Output drive unit with friction bearing



Special 109 Push-open security device

ORDER LENGTH FOR THE OPENER RAIL

Determining the order length for individual length rails

Up-and-over door	Door height + 580 mm
Sectional door with standard tracks	Door height + 830 mm
Sectional door with low-headroom tracks	Door height + 955 mm
Sectional door with tension springs	Door height + 955 mm

TECHNICAL DATA

		SZ 11 1P	SZ 12 1P	SZ 13 1P	SZ 11 2Pc	SZ 12 2Pc	SZ 13 2Pc
Max. door height up-and-over door		2,500	2,750	3,510	2,500	2,750	3,510
Max. door height sectional door A		2,250	2,500	3,260	2,250	2,500	3,260
Max. door height sectional door B		2,125	2,375	3,135	2,125	2,375	3,135
Max. door height sectional door C		2,125	2,375	3,135	2,125	2,375	3,135
Min. travel length *	mm	2,518	2,768	3,528	2,518	2,768	3,528
Profile length	mm	3,080	3,330	4,090	3,080	3,330	4,090
Total length	mm	3,144	3,394	4,154	3,144	3,394	4,154
Packing length	mm	3,144	3,394	4,154	1,604	1,729	2,109
Profile thickness	mm	0.8	0.8	0.8	0.8	0.8	0.8
Partition		1-part	1-part	1-part	2-part	2-part	2-part
Bearing		friction bearing	friction bearing	friction bearing	friction bearing	friction bearing	friction bearing
Operating medium		toothed belt	toothed belt	toothed belt	toothed belt	toothed belt	toothed belt

A Sectional door with standard tracks (values for standard door brands)

B Sectional door with low-headroom tracks (values for standard door brands)

C Sectional door with tension springs (values for standard door brands)

* Depending on the rotation of the opener the travel length is larger. Exact details can be taken from the technical drawing.